

Visit us at:  
[www.artplastics.com.au](http://www.artplastics.com.au)

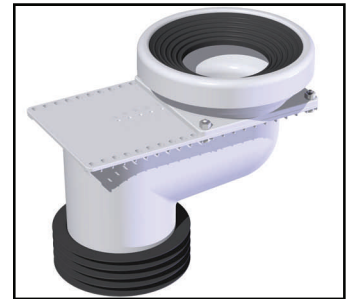
14 White Street  
Bayswater WA 6053

## XP100 Extenda Pan

Solves a multitude of difficult installation situations through the use of its unique and patented extended channel.

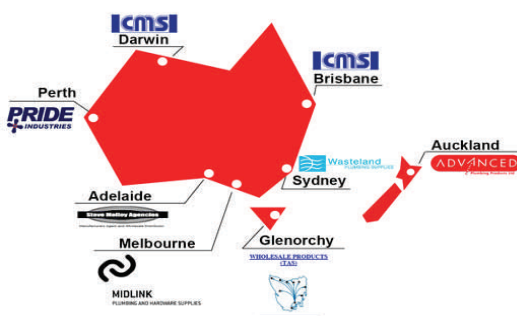
### Features include:

- \* Fully Watermark Approved product.
- \* Allows for variable offsets between the sewer pipe and the pan spigot in 10mm increments up to 100mm. Never again curse a misaligned sewer pipe!
- \* Avoids major jack hammering of the slab and saves hours of installation hassles.
- \* Ideal solution for retrofits of new water efficient pans with only minor rebating required.
- \* May be installed prior to pour to provide flexibility in subsequent pan choice and installation.



WLN 21239

Patent Pending



#### Western Australia

##### Pride Industries:

Ph: 08 9272 6511

Fax: 08 9272 3427

#### Victoria

##### Midlink Plumbing Supplies:

Ph: 03 9879 4080

Fax: 03 9879 4048

#### Queensland & NT

##### Collis Marketing Services:

Ph: 07 3805 6664

Fax: 07 3805 6668

#### New South Wales

##### Wasteland Plumbing Supplies:

Ph: 02 9674 7680

Fax: 02 9674 7681

#### Tasmania

##### Wholesale Products:

Ph: 03 6273 3455

Fax: 03 6273 1901

#### South Australia

##### Steve Molloy Agencies:

Ph: 08 8352 8600

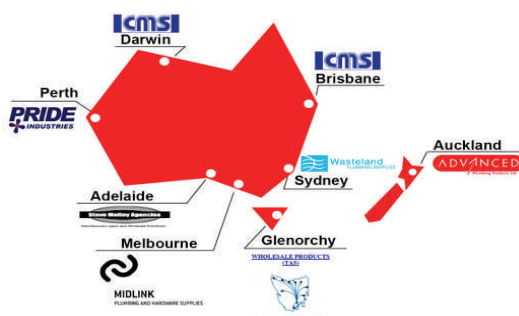
Fax: 08 8352 8622

Visit us at:  
[www.artplastics.com.au](http://www.artplastics.com.au)

14 White Street  
Bayswater WA 6053

### XP100 Pan Connector Installation Instructions:

- Mark and measure the offset required between the pan spigot and the sewer pipe.
- Use a 79mm hole saw to cut a hole in the channel lid of the XP100 pan connector using the series of guide holes to get the required offset. N.B. These offset guide hole positions relate directly to the fixing holes along the outside for attachment of the poop scoop, so accurate centring is vital for the two components to fit together. It is not possible to drill the hole in between these guide holes.
- Lubricate and position the O-ring in the groove of the poop scoop.
- Fix the poop scoop onto the channel lid of the XP100 pan connector using the four stainless steel nuts included, spring washers and bolts. N.B. The bolt comes up from below the channel lid, through the associated hole in the poop scoop and then through a spring washer and is fixed by the Nut going on top (see diagram)
- Use the mini spanner provided to tighten each nut and bolt evenly allowing predetermined compression to provide an air tight seal.
- Position the assembly in the sewer pipe by inserting the flexi seal into the sewer pipe. Use lubrication if necessary.
- Dummy fit the toilet onto the assembly to determine the extent of chipping required. N.B. The top of the pan seal should be level as the XP100 incorporates a 5° fall in the body of the unit.
- Position the toilet pan over the XP100 ensuring full engagement between the spigot and the pan seal. Use lubrication if necessary.
- Fit the toilet pan to the floor as per the pan instructions.
- The XP100 Extenda Pan may be installed prior to pour to provide flexibility in subsequent pan choice and installation. If you prefer this option, the undrilled body assembly should be wrapped in lagging foam during the pour to allow extraction at a later date when the pan is being installed so that the hole can be drilled and poop scoop fitted.



#### Western Australia

##### Pride Industries:

Ph: 08 9272 6511  
Fax: 08 9272 3427

#### Victoria

##### Midlink Plumbing Supplies:

Ph: 03 9879 4080  
Fax: 03 9879 4048

#### Queensland & NT

##### Collis Marketing Services:

Ph: 07 3805 6664  
Fax: 07 3805 6668

#### New South Wales

##### Wasteland Plumbing Supplies:

Ph: 02 9674 7680  
Fax: 02 9674 7681

#### Tasmania

##### Wholesale Products:

Ph: 03 6273 3455  
Fax: 03 6273 1901

#### South Australia

##### Steve Molloy Agencies:

Ph: 08 8352 8600  
Fax: 08 8352 8622